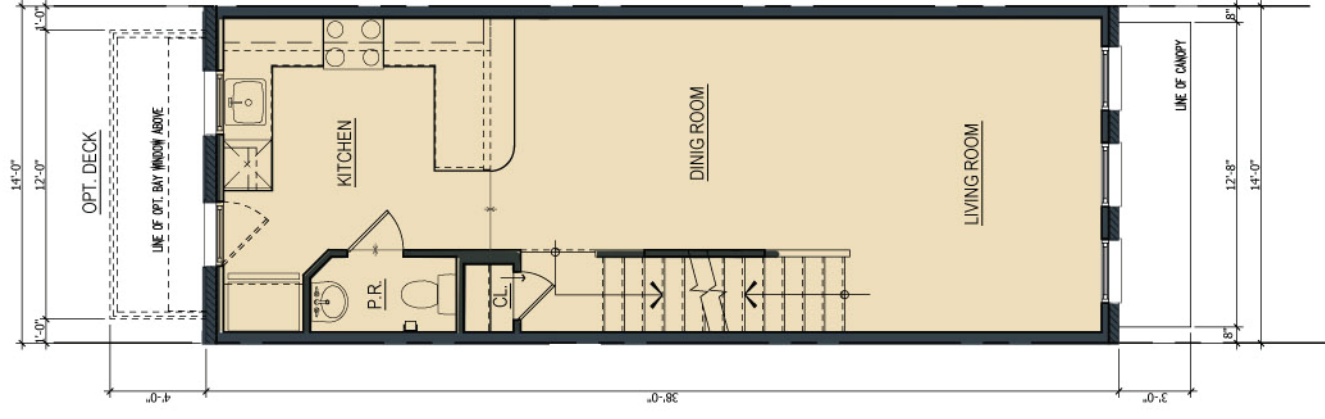
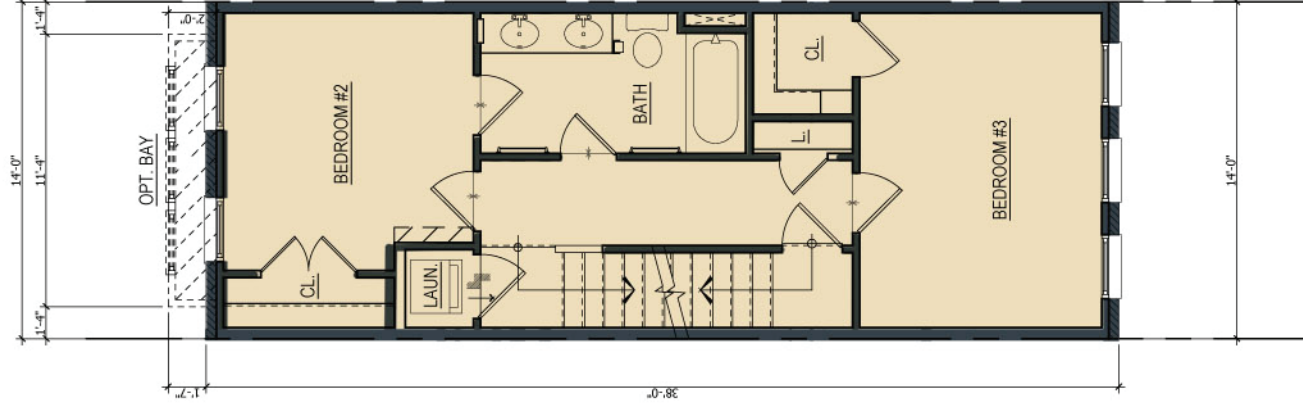


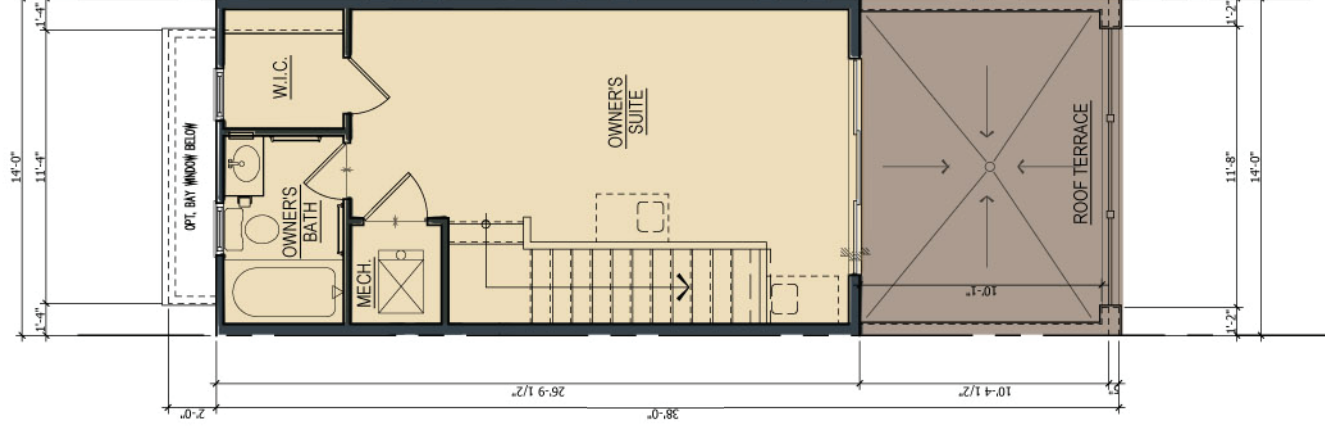
FIRST FLOOR



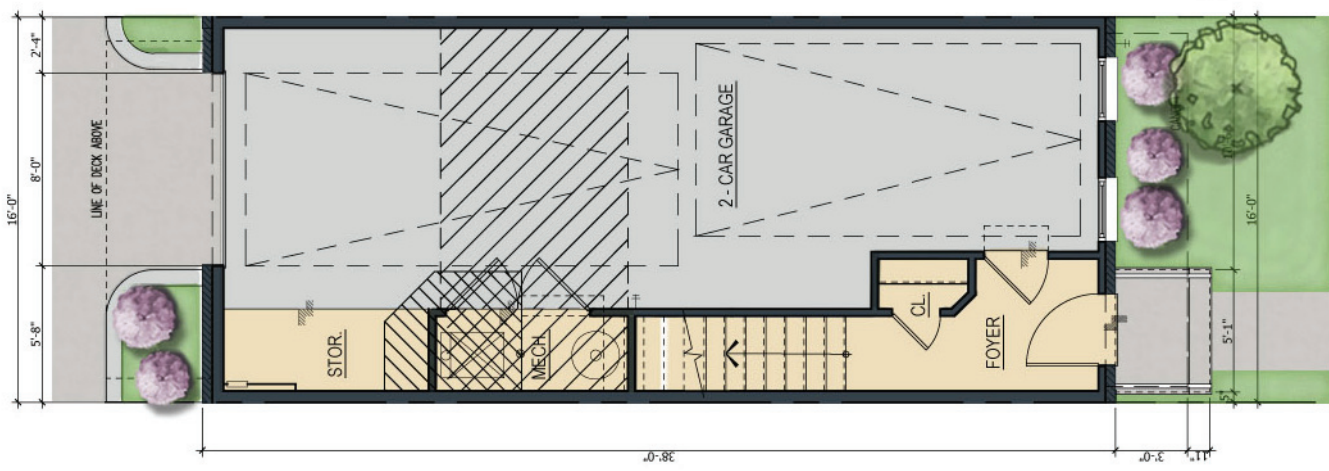
SECOND FLOOR



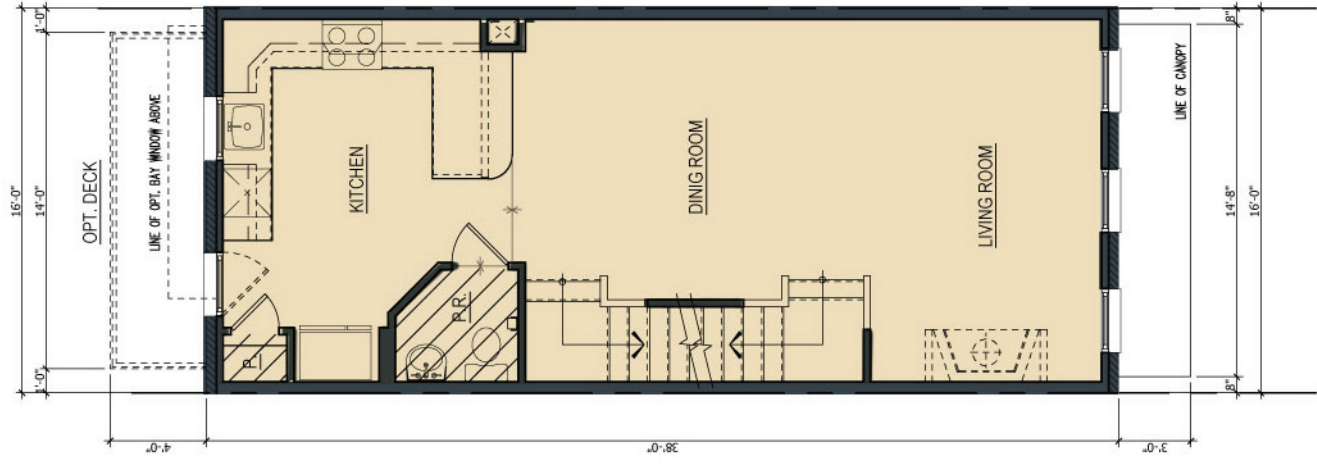
THIRD FLOOR



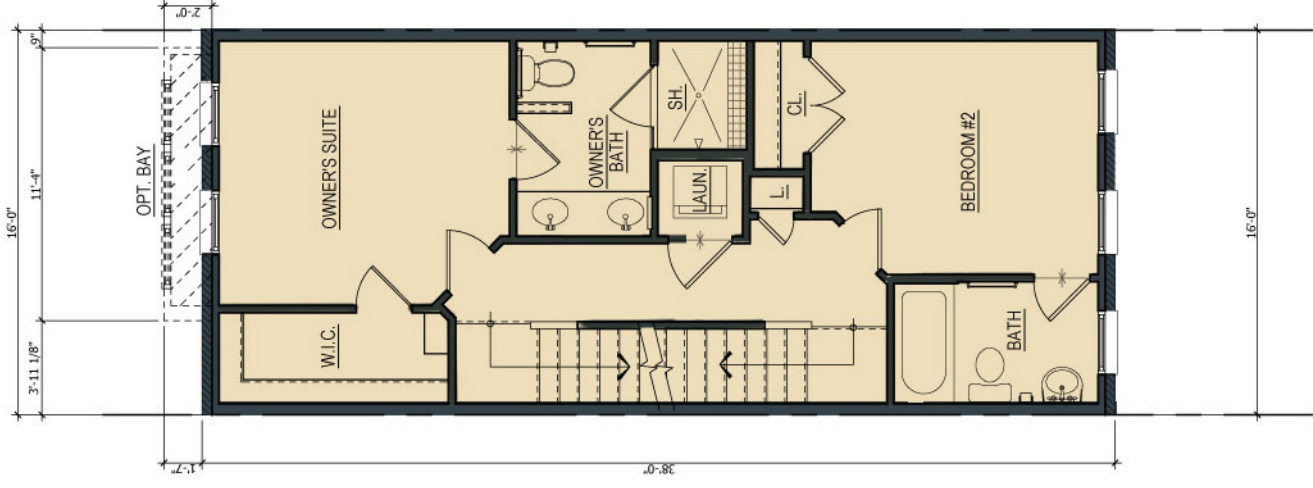
FOURTH FLOOR



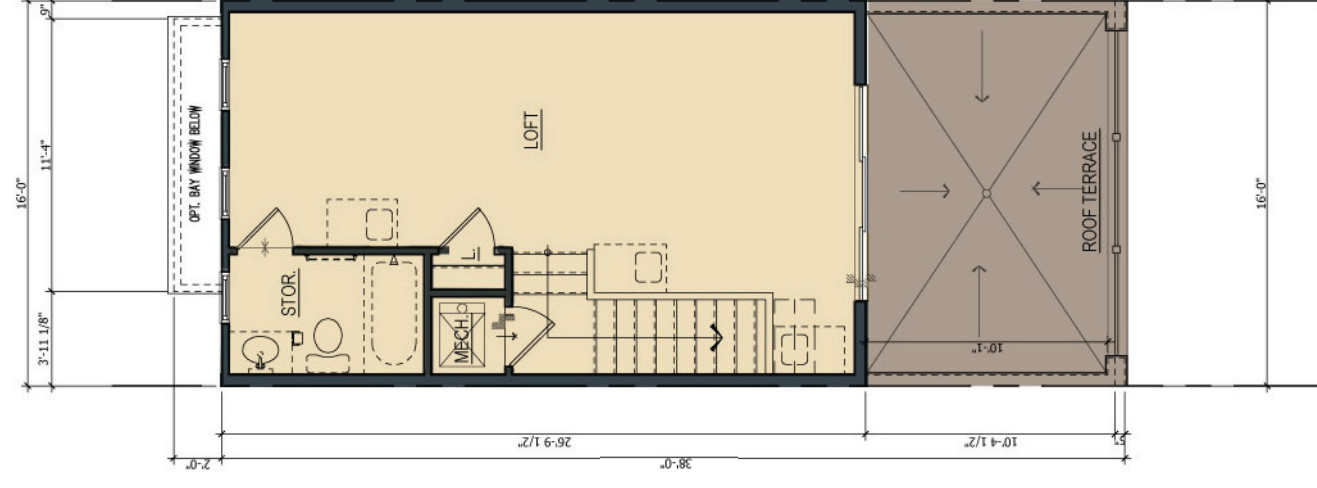
FIRST FLOOR



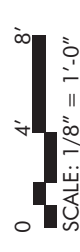
SECOND FLOOR



THIRD FLOOR

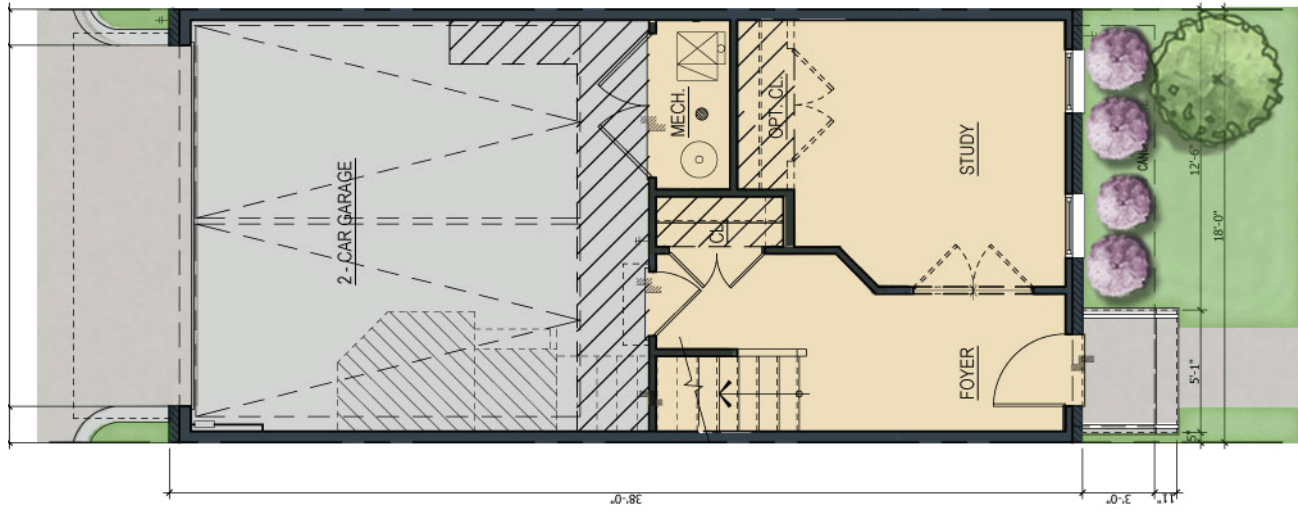


FOURTH FLOOR

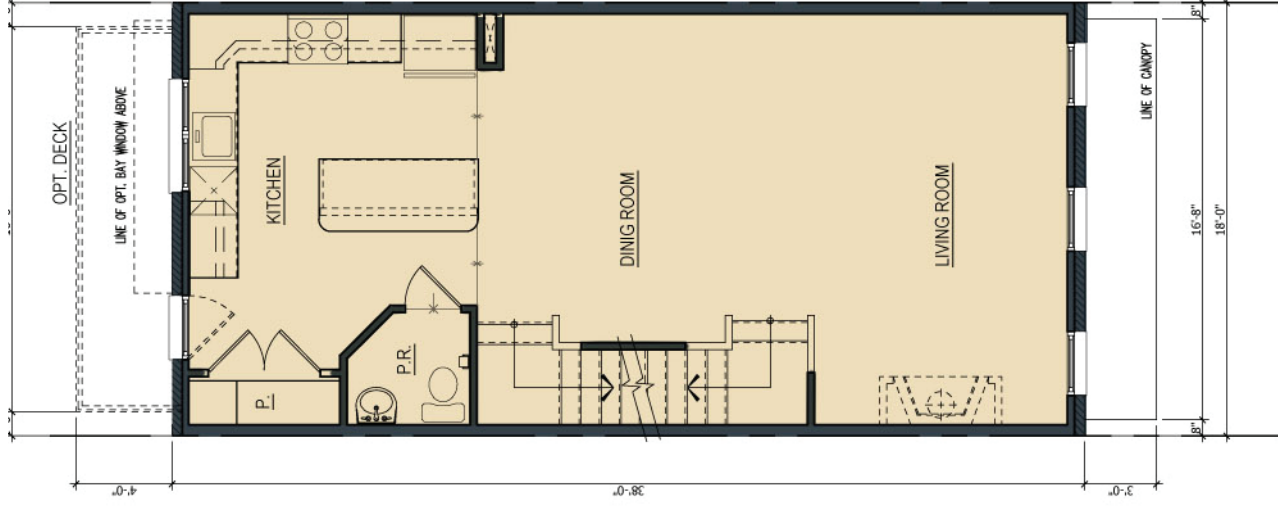


ROW HOUSE • B UNIT (16' WIDE)

INTERIOR PLAN LAYOUTS ARE CONCEPTUAL AND FOR ILLUSTRATIVE PURPOSES; FINAL LAYOUTS MAY VARY.



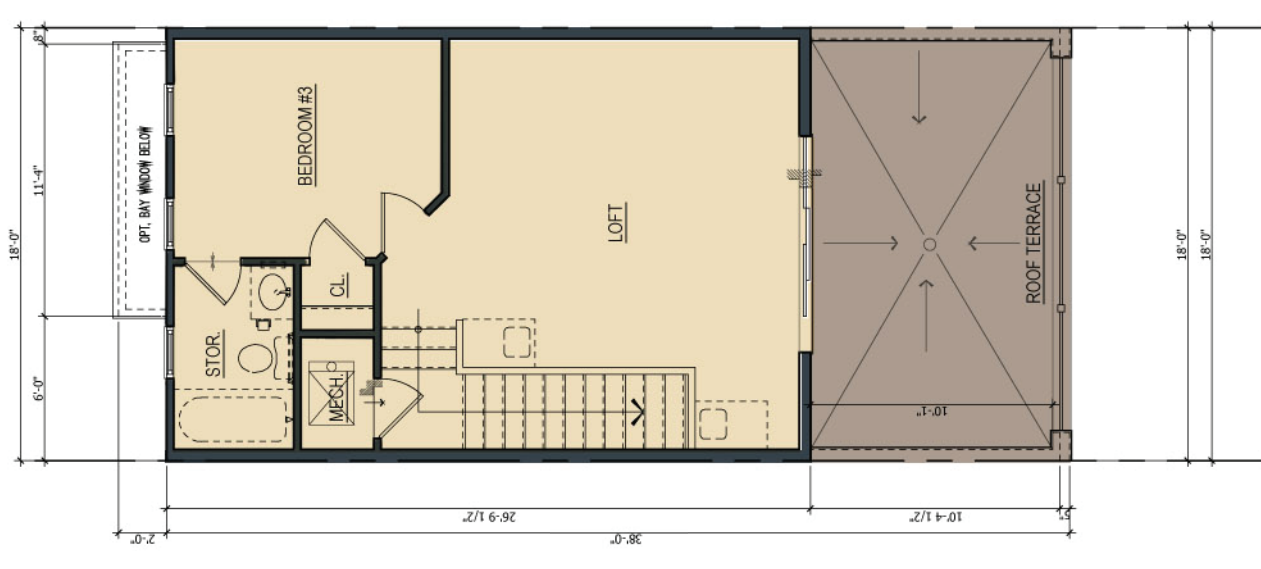
FIRST FLOOR



SECOND FLOOR



THIRD FLOOR

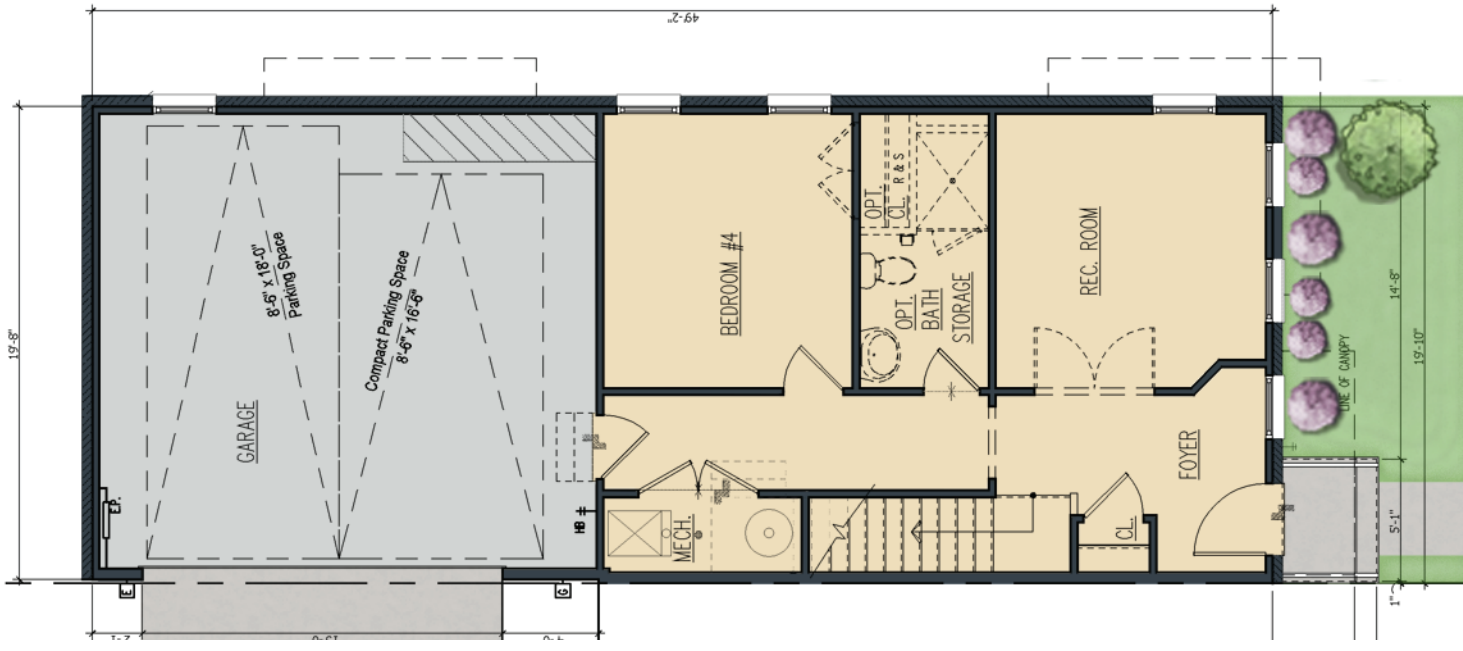


FOURTH FLOOR

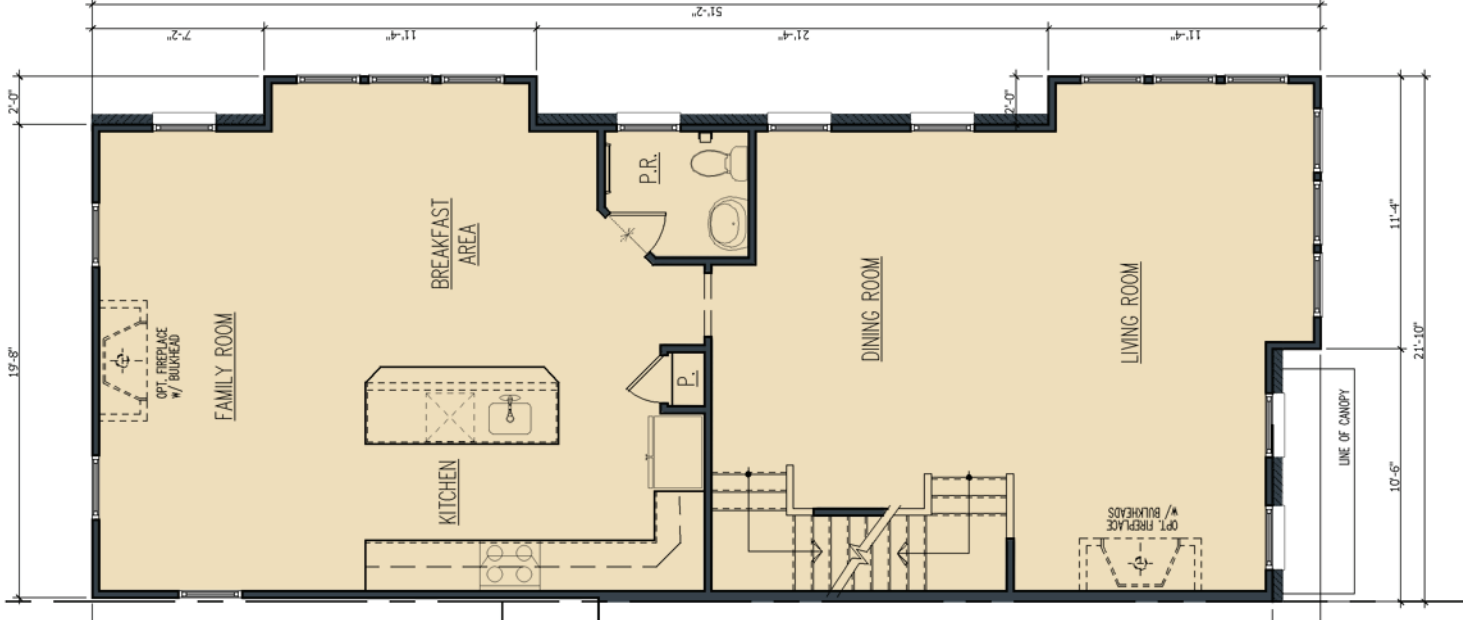
ROW HOUSE • C UNIT (18' WIDE)

INTERIOR PLAN LAYOUTS ARE CONCEPTUAL AND FOR ILLUSTRATIVE PURPOSES; FINAL LAYOUTS MAY VARY.

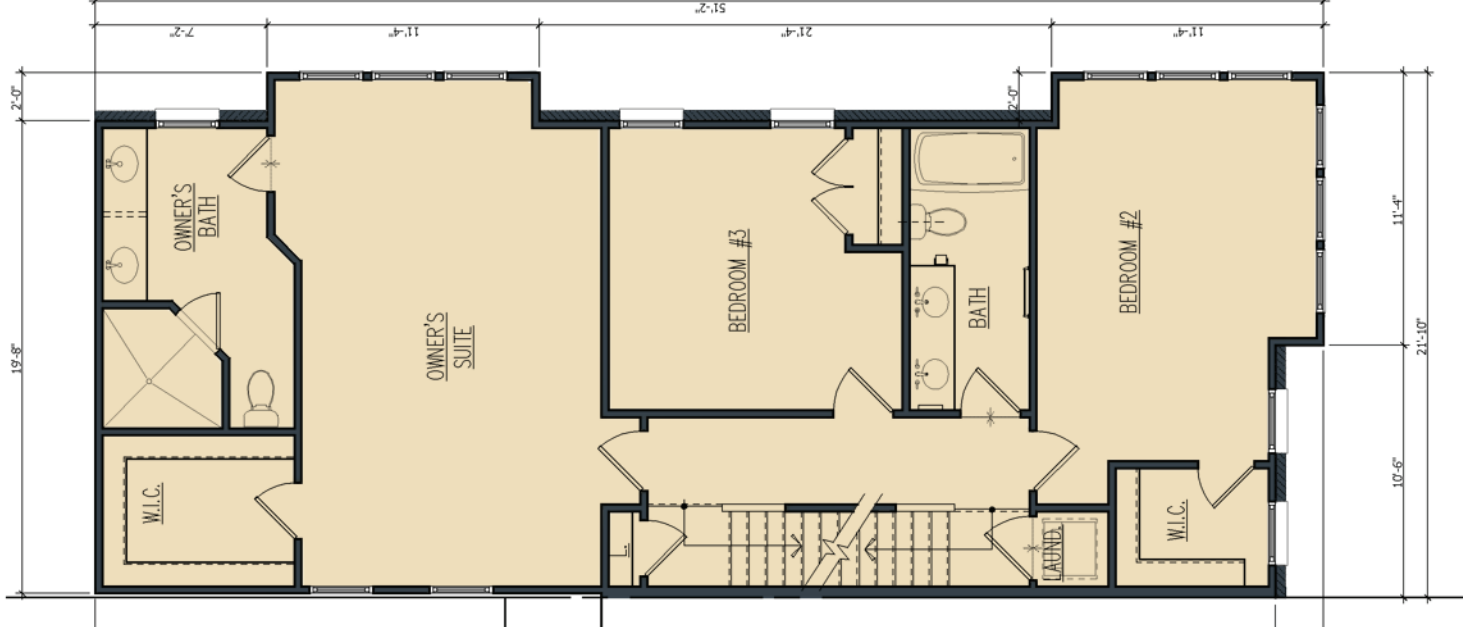




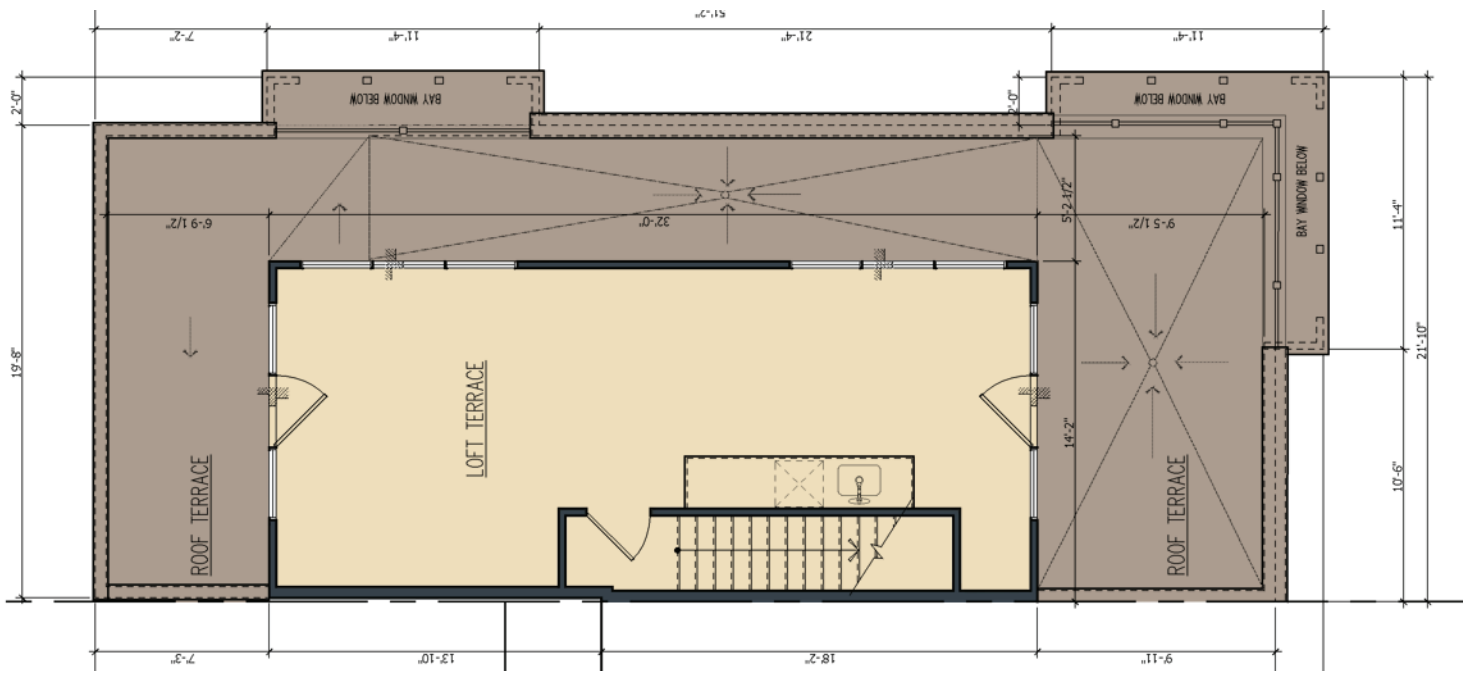
FIRST FLOOR



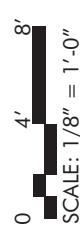
SECOND FLOOR



THIRD FLOOR

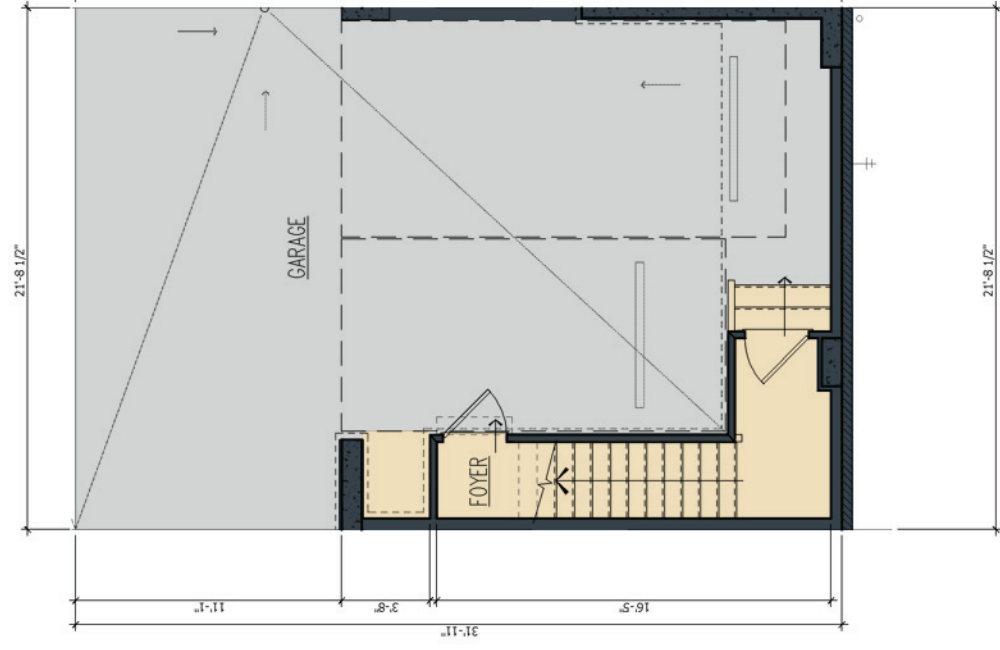


FOURTH FLOOR

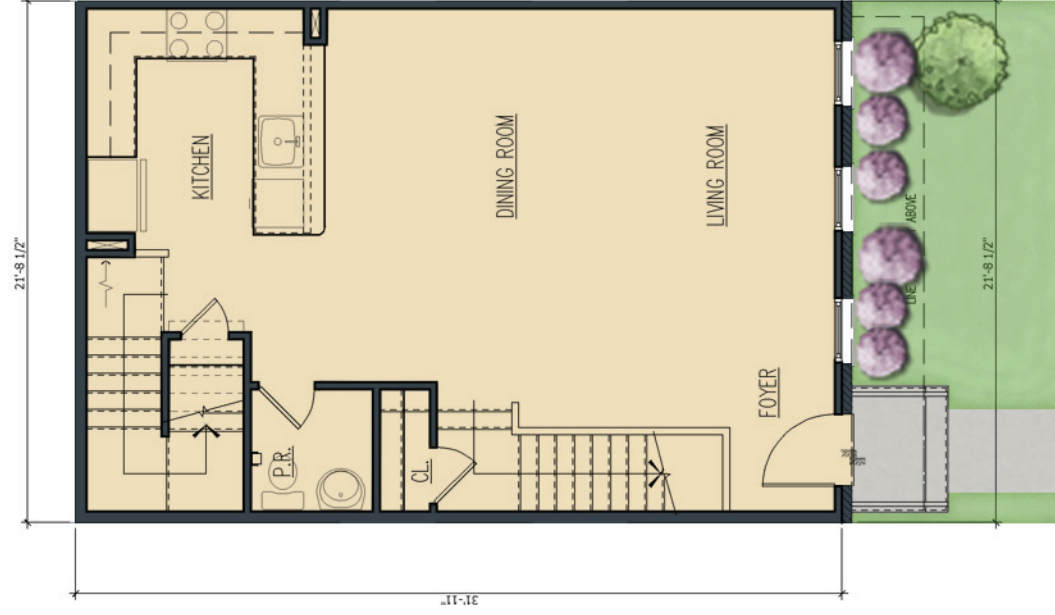


ROW HOUSE • D UNIT (CORNER/20' WIDE)

INTERIOR PLAN LAYOUTS ARE CONCEPTUAL AND FOR ILLUSTRATIVE PURPOSES; FINAL LAYOUTS MAY VARY.



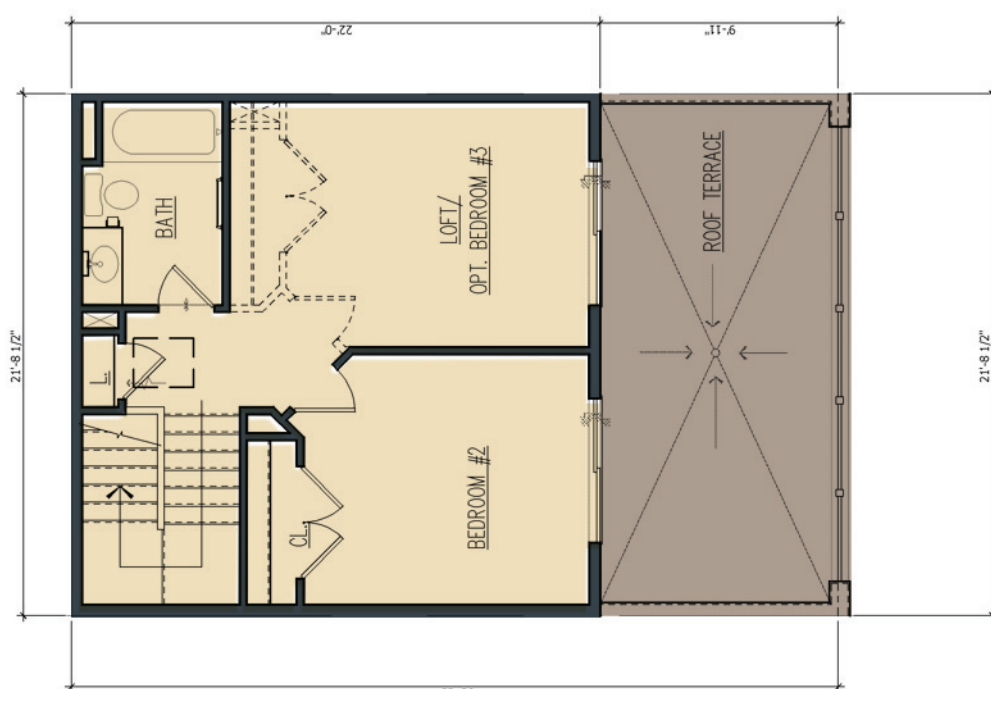
BASEMENT FLOOR



FIRST FLOOR



SECOND FLOOR

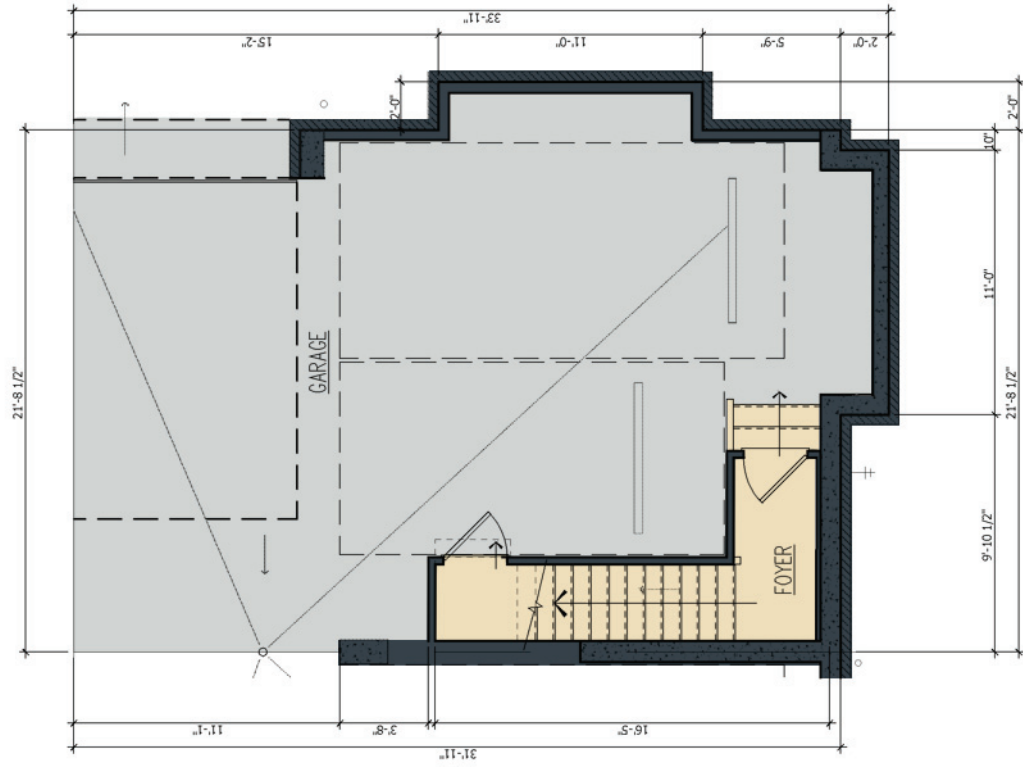


THIRD FLOOR

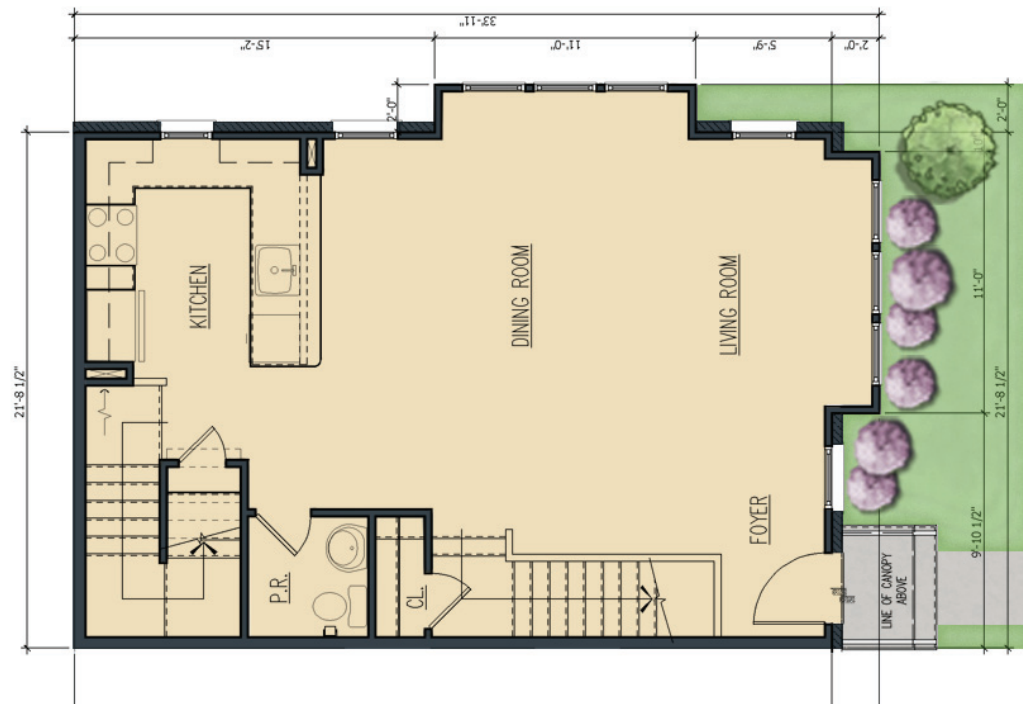
BACK-TO-BACK BUILDING • E UNIT (22' WIDE)

INTERIOR PLAN LAYOUTS ARE CONCEPTUAL AND FOR ILLUSTRATIVE PURPOSES; FINAL LAYOUTS MAY VARY.

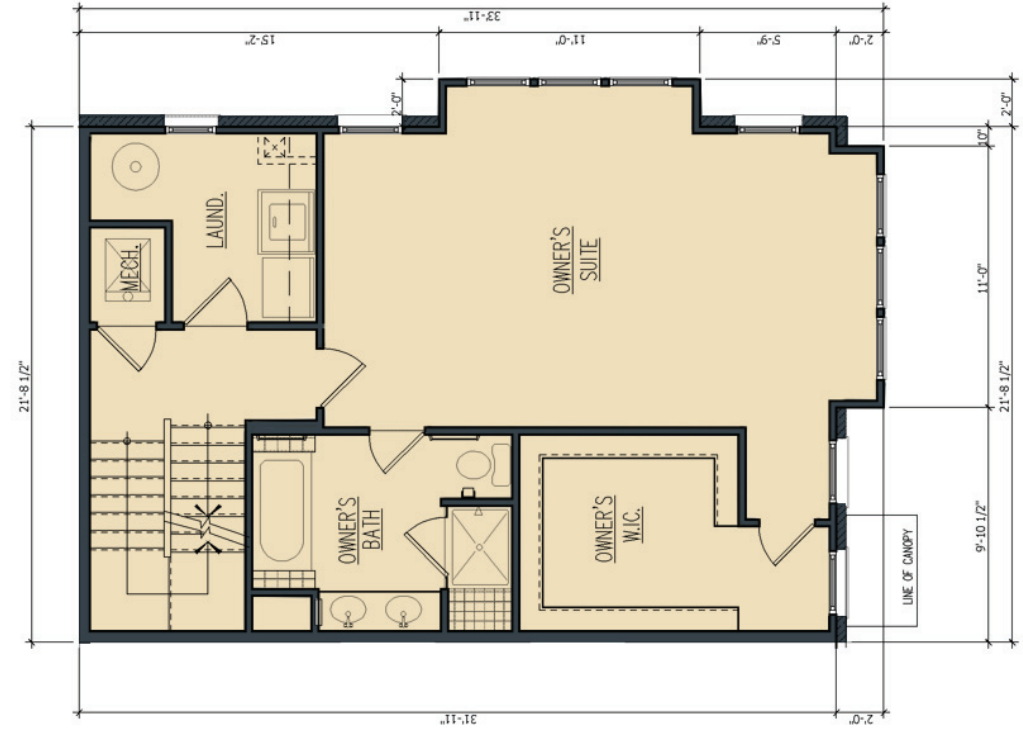




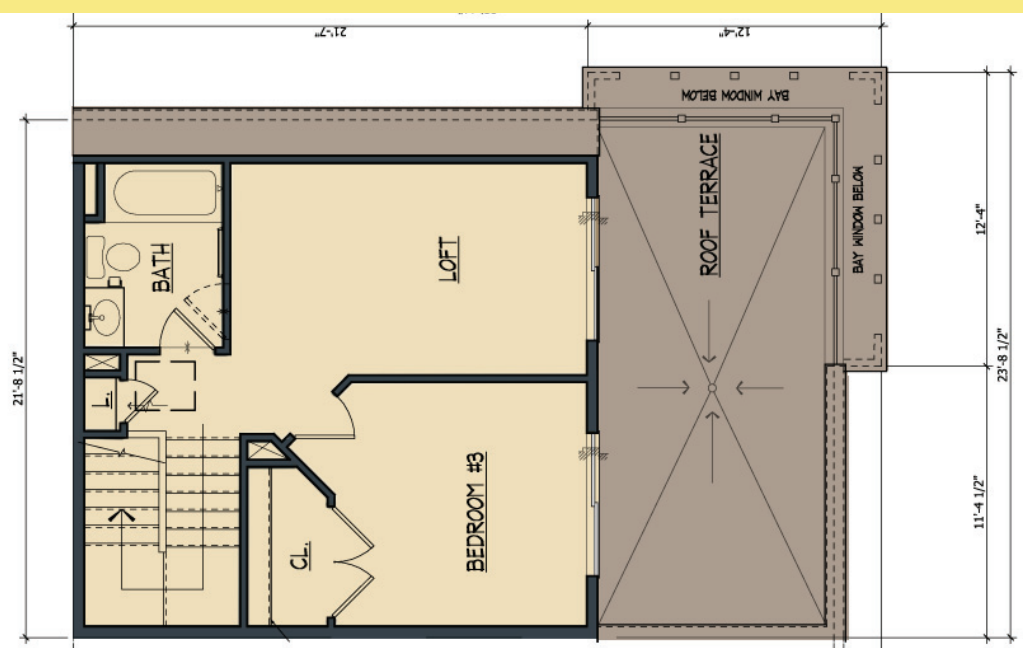
BASEMENT FLOOR



FIRST FLOOR



SECOND FLOOR

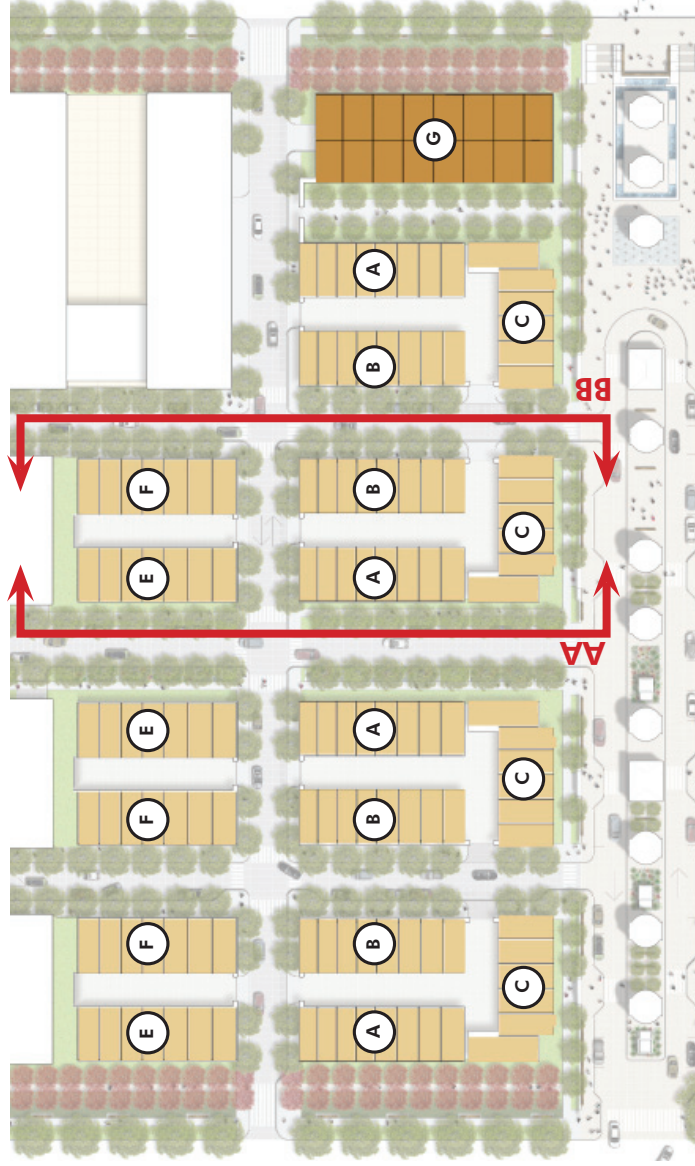


THIRD FLOOR



BACK-TO-BACK BUILDING • F UNIT (22' WIDE)

INTERIOR PLAN LAYOUTS ARE CONCEPTUAL AND FOR ILLUSTRATIVE PURPOSES; FINAL LAYOUTS MAY VARY.



BUILDING KEY PLAN

BUILDING **(E)**

STREET ELEVATION **AA**: HALF STREET • EAST SIDE ELEVATION



BUILDING **(C)**

STREET ELEVATION **BB**: "QUARTER" STREET • WEST SIDE ELEVATION

BUILDING **(B)**

0 8' 16'
SCALE: 1/16" = 1'-0"